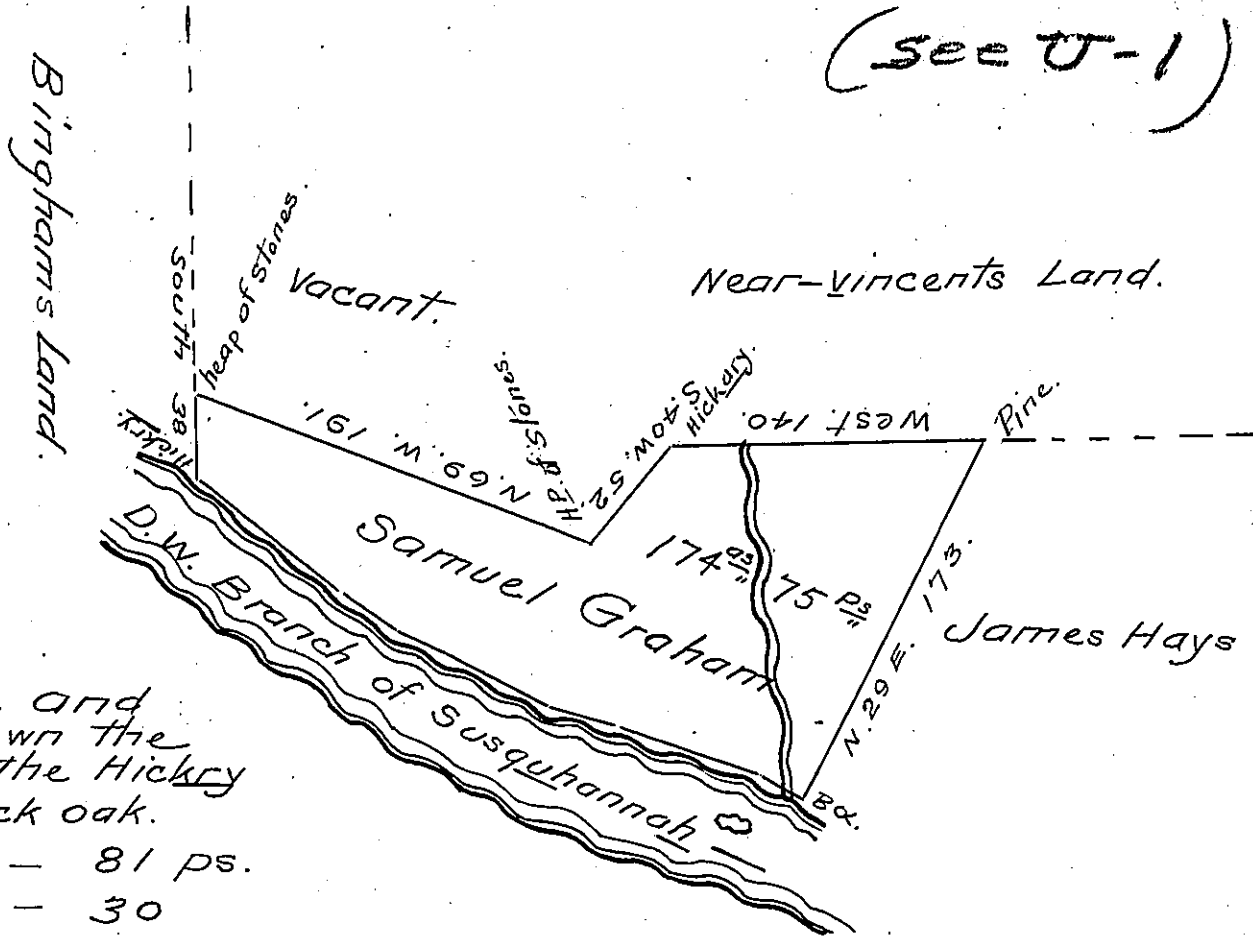


(see U-1)



The Course and Distance down the River from the Hickory to the Black oak.

- S. 50 E - 81 ps.
- S. 57 E - 30
- S. 60 E - 26
- S. 64 E - 48
- S. 75 E - 32
- S. 70 E - 68
- S. 66 E - 21 Bx.

Draught of a tract of Land, Situate in the Last purchase, on the north side of the West branch of Susquehanna, about two miles below Young woman's Creek and bounded as above described Survey'd the 23^d day of January 1818 by virtue of a warrant granted to Samuel Graham, bearing date the 22^d day of December 1817 Contain- ing, one hundred and seventy four Acres, and seven- ty five perches, with the allowance of six per cent.

Note the improvement is a house where Samuel Graham and family resides with about sixteen a- cres clear'd Land

To Jacob Spangler Esq. } David McMicken D.S.
 Surveyor General }

IN TESTIMONY that the above is a copy of the original remaining on file in the Department of Internal Affairs of Pennsylvania, made conformably to an Act of Assembly approved the 16th day of February, 1833, I have hereunto set my Hand and caused the Seal of said Department to be affixed at Harrisburg, this thirty first day of January 1905.

James B. Parsons
 Secretary of Internal Affairs.